

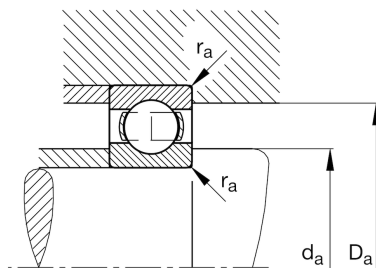
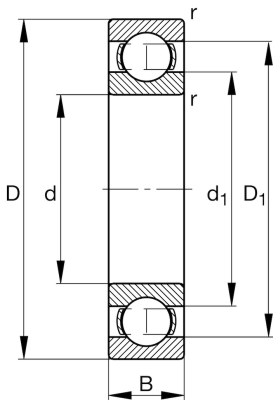
FAG

**6032**

Deep groove ball bearing

Schaeffler ID:  
0190027260000Deep groove ball bearing 60, single row,  
steel sheet metal cage

## Technical information

**Main Dimensions & Performance Data**

d	160 mm	Bore diameter
D	240 mm	Outside diameter
B	38 mm	Width
$C_r$	142.000 N	Basic dynamic load rating, radial
$C_{0r}$	136.000 N	Basic static load rating, radial
$C_{ur}$	6.000 N	Fatigue load limit, radial
$n_G$	3.700 1/min	Limiting speed
$n_{gr}$	3.750 1/min	Reference speed
	5,302 kg	Weight

**Dimensions**

$r_{min}$	2,1 mm	Minimum chamfer dimension
$D_1$	214,6 mm	Shoulder diameter outer ring
$d_1$	186,2 mm	Shoulder diameter inner ring

**Mounting dimensions**

$d_{a min}$	170,2 mm	Minimum diameter shaft shoulder
$D_{a max}$	229,8 mm	Maximum diameter of housing shoulder
$r_{a max}$	2,1 mm	Maximum fillet radius

**Calculation factors**

$f_0$	16	Calculation factor
-------	----	--------------------

**Temperature range**

$T_{min}$	-30 °C	Operating temperature min.
$T_{max}$	150 °C	Operating temperature max.